

**WESTERN RESERVE BUILDING**  
CLEVELAND, OHIO 44115, 216-781-9144

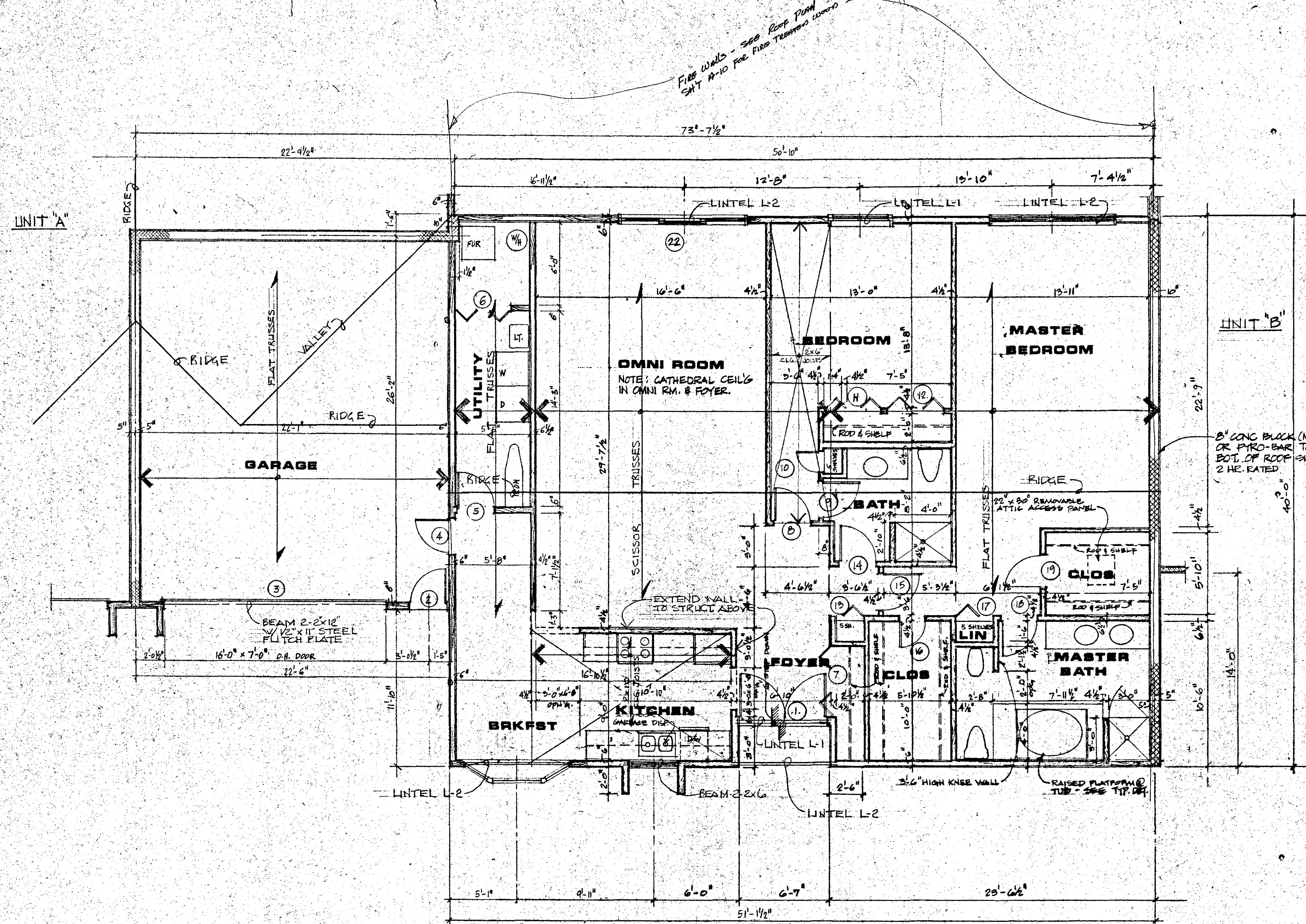
**RICHMOND ROAD CONDOMINIUMS**  
RICHMOND ROAD BEACHWOOD, OHIO  
CONDOMINIUM CONCEPTS INC.  
CLEVELAND

**KEEVA J. KEKST ASSOCIATES ARCHITECTS INC.**



**FRAMING \*1"**  
**UNIT "A"**  
**BUILDING NO. 4**

DWN. BY  
DATE: 5/22/84  
JOB NO. 81072  
**A-16**



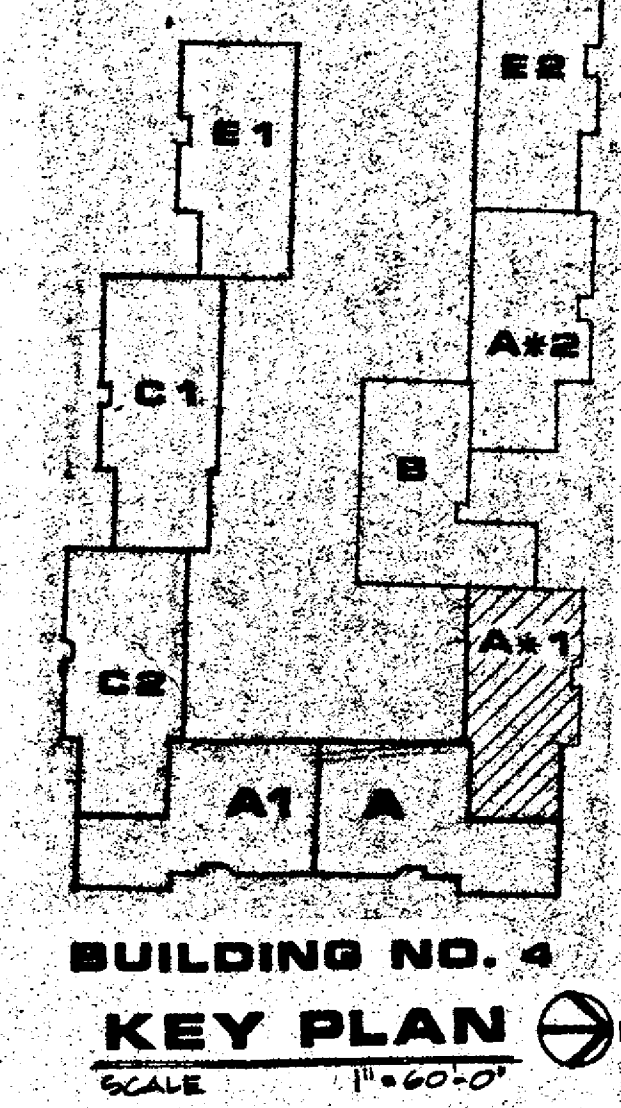
**CONSTRUCTION DRAWINGS**  
Date: 5-29-83

8" LONG BUCK (MIN) OR PYRO-BAR TO BOT. OF ROOF SHEATHING 2 HR. RATED.

\* IN GARAGE  
2 LAYERS OF 1/2" FIRE CODE GYP. BD. BOTH SIDES OF STUDS. EXTEND TO BOT. OF ROOF DECK.

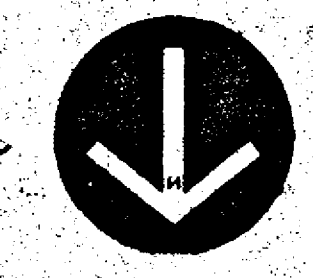
Mechanical Contractor to provide for exhaust air for heater portion of utility rooms. All fans to exhaust directly to outside with solid connection. With raincap.

- Note:
- Interior dimensions as shown on plans are correct but not to scale. Do not scale drawings.
  - See Sheet A-1 for door schedule.



**FRAMING UNIT "A" \*1" FLOOR PLAN**

SCALE: 1/4"=1'-0"



**WINDOW SCHEDULE**

**UNIT A**

ROOM		
MBR	1	4-2060 LFPR
BR	1	2-2060 LR
GAR	1	3-1636 FFF
BREST	1	AB/30-20-36-2048
KITCHN	1	2-1636 LR

**Rough Openings**

8'-5-3/4" x 5'-6-1/2"
4'-5-1/4" x 3'-6-1/2"
5'-4-1/2" x 3'-6-1/2"
7'-5-7/8" x 4'-6-1/2"
3'-7-1/4" x 3'-6-1/2"

Note:  
Gas meter manifolds to be located at ends of west legs of each cluster. Provide gas service in black iron pipe from meter overhead through units in plastic conduit.

©COPYRIGHTED  
MOSKOWITZ & COMPANY  
DATE: 5/22/84

WARNING:  
Certain concepts embodied in this drawing are covered by U.S. Patent No. 4,345,487  
Maurice J. Fishman, Inventor

\*\* 2-LAYERS OF 1/2" FIRE CODE GYP. BD. EACH SIDE OF STUDS. EXTEND TO BOT. OF ROOF DECK.

FOR LINTEL SCHEDULE SEE SHEET A-15