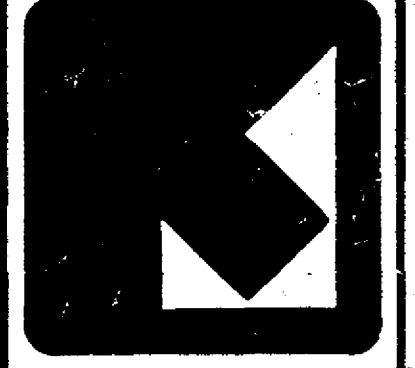


WESTERN RESERVE BUILDING  
CLEVELAND, OHIO 44113, 216-7819144

**RICHMOND ROAD CONDOMINIUMS**  
RICHMOND ROAD BEACHWOOD, OHIO  
CONDOMINIUM CONCEPTS INC. CLEVELAND

**KEEVA J. KEKST ASSOCIATES ARCHITECTS INC.**

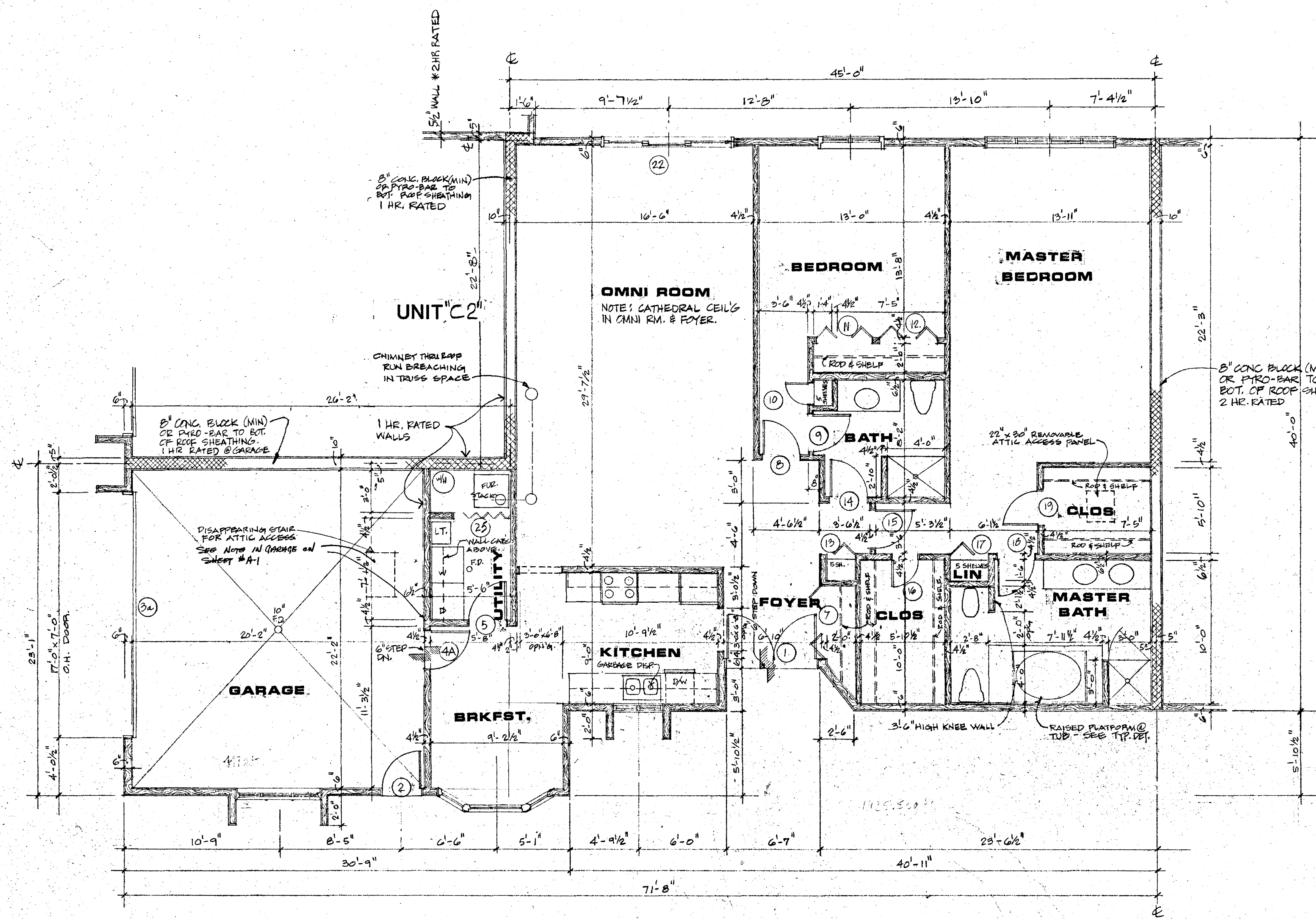


**UNIT "A1"**  
BUILDING NO. 4

DWN. BY  
DATE: 5/2/84  
JOB NO. 81072  
**A-2**

# CONSTRUCTION DRAWINGS

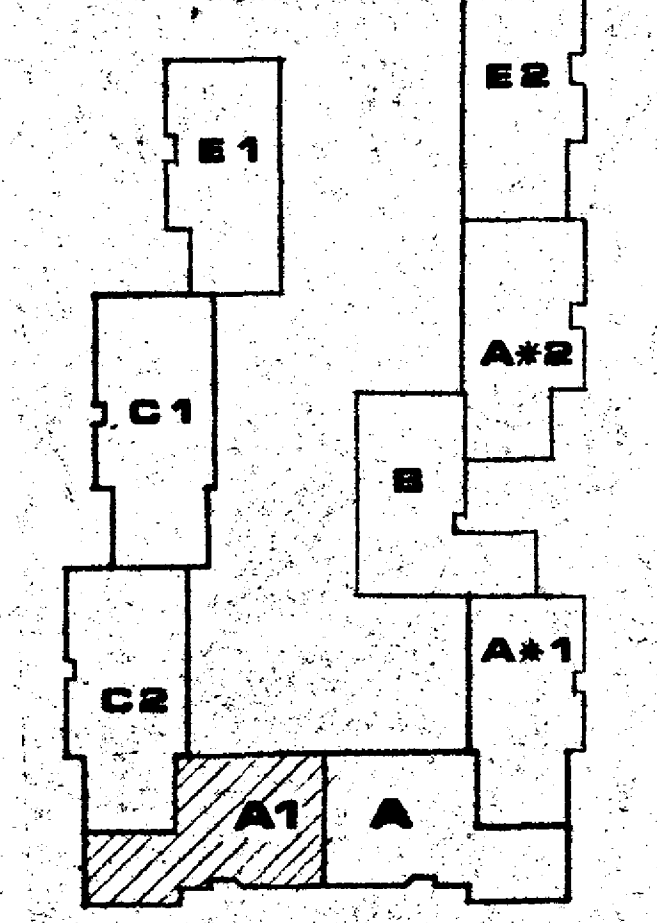
Date 5-29-84



\* IN GARAGE  
2 LAYERS OF 1/2" FIRE CODE  
GYP. BD. BOTH SIDES OF STUDS.  
EXTEND TO BOT. OF ROOF DECK.

Mechanical Contractor to provide  
for combustion air for heater portion  
of utility rooms.  
All fans to exhaust directly to  
outside with solid connection.  
With raincap.

- Note:
- Interior dimensions as shown on plans are correct but not to scale. Do not scale drawings.
  - See Sheet A-1 for door schedule.



**BUILDING NO. 4**  
**KEY PLAN**  
SCALE 1"=60'-0"

## UNIT "A1" FLOOR PLAN

SCALE: 1/4"=1'-0"  
UNIT "A1" 1926 SQ. FT. / GARAGE 447 SQ. FT.

Note:  
Gas meter manifolds to be located at ends of west legs of each cluster. Provide gas service in black iron pipe from meter overhead through units in plastic conduit.

WINDOW SCHEDULE

| Room   | Window Schedule    |
|--------|--------------------|
| MBR    | 1 4-2060 LFFR      |
| BR     | 1 2-2060-LR        |
| CAR    | 1 3-1636 FFF       |
| BRKST  | 1 AB/30-20-36-2048 |
| KITCHN | 1 2-1636 LR        |

Rough Openings

|                       |
|-----------------------|
| 8'-5-3/4" x 5'-6-1/2" |
| 4'-3-1/4" x 5'-6-1/2" |
| 5'-4-1/2" x 3'-6-1/2" |
| 7'-3-7/8" x 4'-6-1/2" |
| 3'-7-1/4" x 3'-6-1/2" |

© COPYWRITED  
MOSKOWITZ & COMPANY  
DATE 5/2/84  
WARNING:  
Certain concepts embodied  
in this drawing are covered  
by U.S. Patent No. 4,345,407  
Maurice J. Fishman, Inventor

\*\* 2-LAYERS OF 1/2" FIRE CODE  
GYP. BD. EACH SIDE OF STUDS.  
EXTEND TO BOT. OF ROOF DECK.