

CONSTRUCTION DRAWINGS

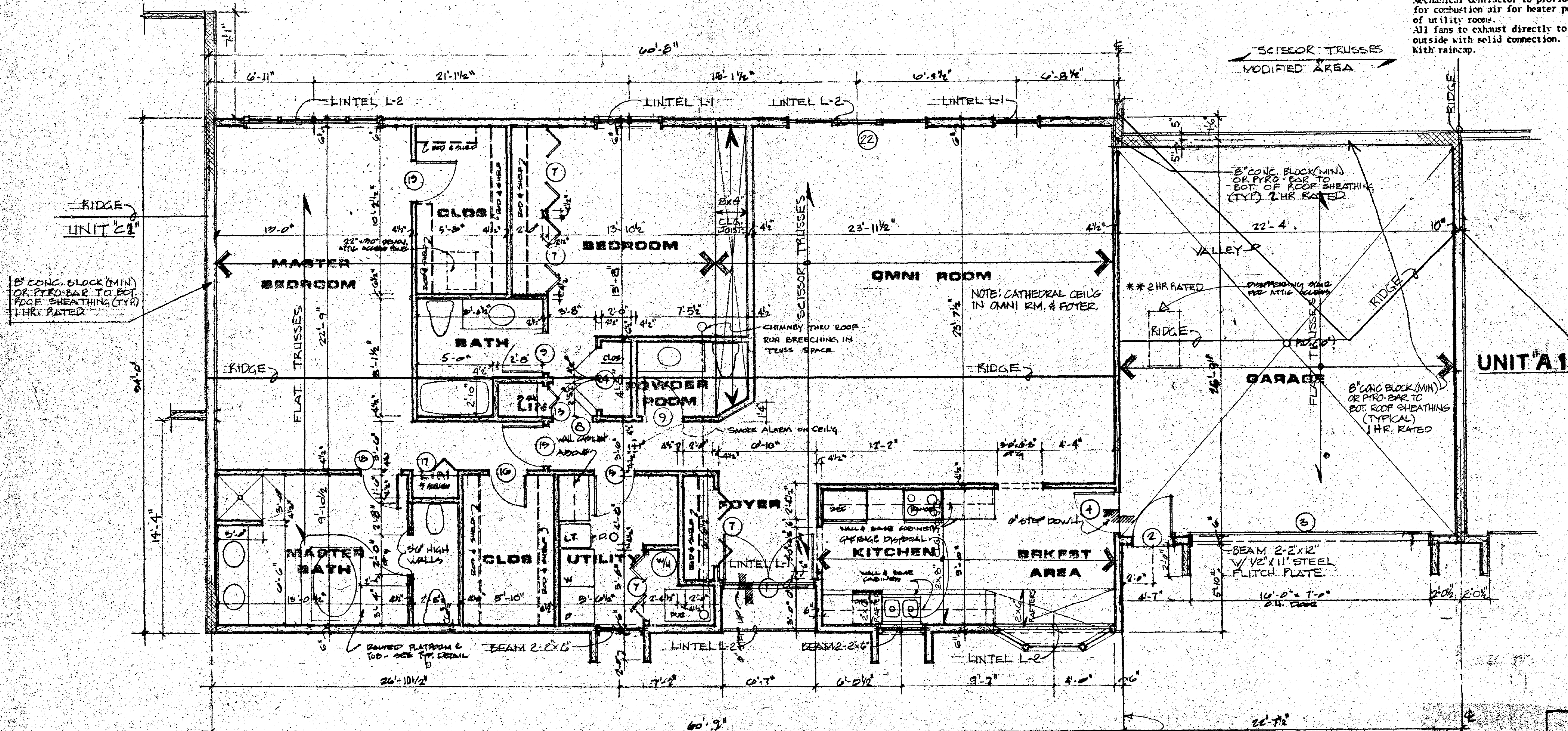
Date 5-29-84

FOR LINTEL SCHEDULE
SEE SHEET A-15

* (W/SPACE)

Firewall must extend one side of this wall to underside of roof sheathing.

Mechanical Contractor to provide for combustion air for heater portion of utility rooms.
All fans to exhaust directly to outside with solid connection with raincap.



8" CONC. BLOCK (MIN) OR PYRO-BAR TO BOT. OF ROOF SHEATHING (TYP.) 1 HR. RATED

8" CONC. BLOCK (MIN) OR PYRO-BAR TO BOT. OF ROOF SHEATHING (TYP.) 2 HR. RATED

8" CONC. BLOCK (MIN) OR PYRO-BAR TO BOT. OF ROOF SHEATHING (TYPICAL) 1 HR. RATED

FOR LINTEL SCHEDULE
SEE SHT. A-15

Fire wall - see Roof Plan
SHT. A-10 For Fire Trusses
(W/SPAC)

- Note:
- Interior dimensions as shown on plans are correct but not to scale. Do not scale drawings.
 - See Sheet A-1 for door schedule.

FRAMING UNIT "C2" FLOOR PLAN

Note:
Gas meter manifolds to be located at ends of west legs of each cluster. Provide gas service in black iron pipe from meter overhead through units in plastic conduit.

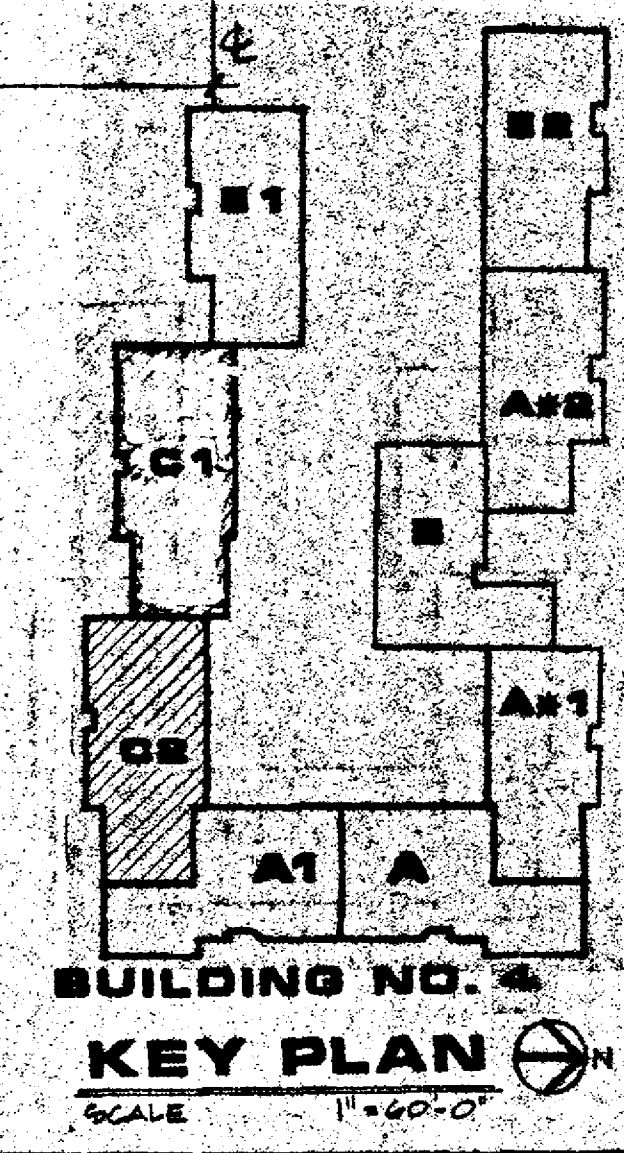
WINDOW SCHEDULE		
UNIT C		
Room	Qty	Description
BR	1	4-2060 LFR
BR	1	2-2060 LR
BRFST	1	AB/30-26-30-2048
KITCHN	1	2-1636 LR
UTILITY	1	2-1636 LR

Rough Openings:
8'-5-3/4" x 5'-6-1/2"
8'-3-1/4" x 5'-6-1/2"
7'-3-7/8" x 4'-6-1/2"
3'-7-1/4" x 3'-6-1/2"
3'-7-1/4" x 3'-6-1/2"

2 LAYERS OF 1/2" FIRE CODE GYP BR EACH SIDE OF STUDS. EXTEND TO BOT. OF ROOF DECK.

COPYRIGHTED
MOSKOWITZ & COMPANY
DATE: 5/29/84

WARNING:
Certain concepts embodied in this drawing are covered by U. S. Patent No. 4,345,407
Maurice J. Fishman, Inventor



KEEVA J. KEKST ASSOCIATES ARCHITECTS INC. AIA

WESTERN RESERVE BUILDING CLEVELAND, OHIO 44113, 216-781-9144

RICHMOND ROAD CONDOMINIUMS

RICHMOND ROAD BEACHWOOD, OHIO

CONDOMINIUM CONCEPTS INC. CLEVELAND

FRAMING UNIT "C2"

BUILDING NO. 4

DOWN BY

DATE: 5/29/84

JOB NO. 81072

A-20