

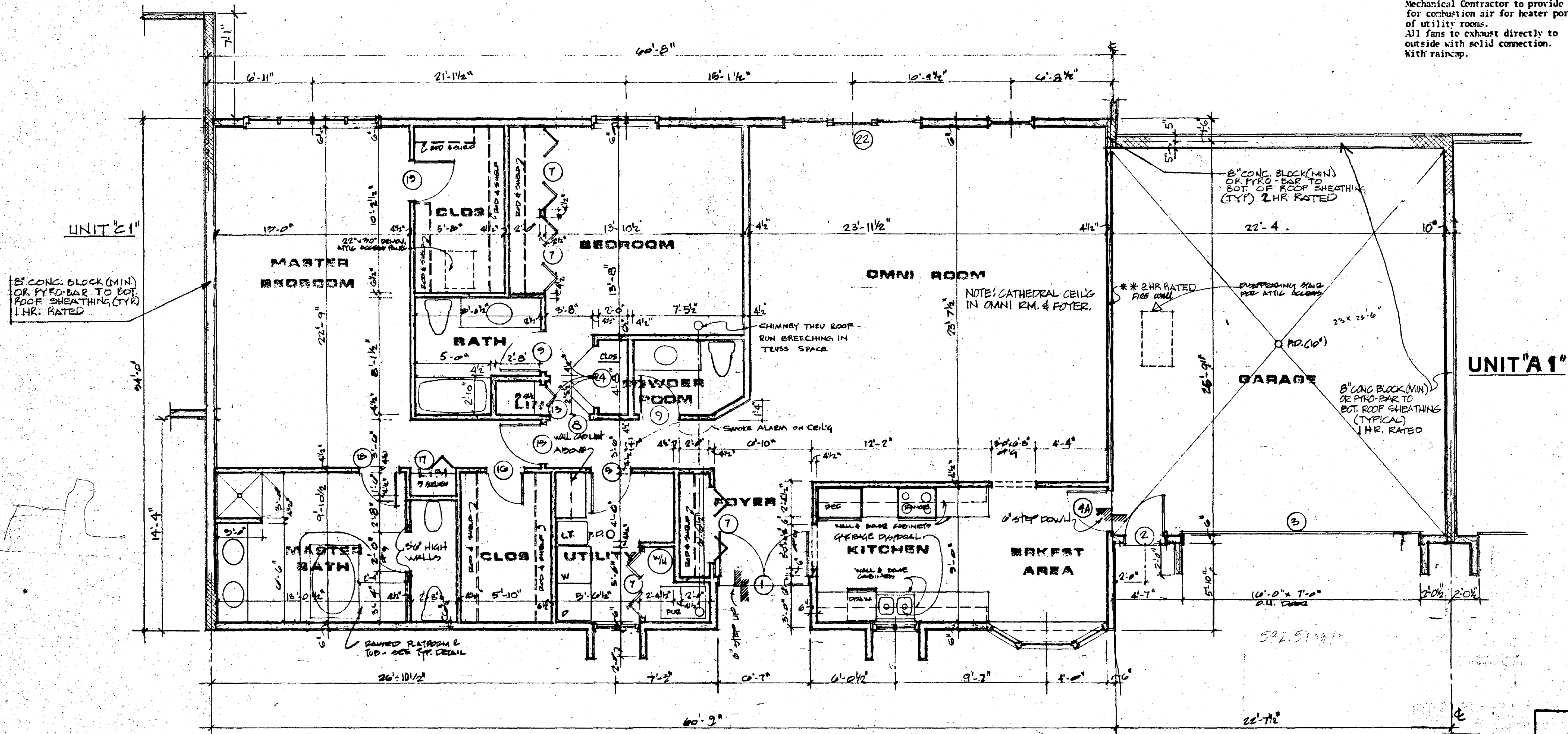
CONSTRUCTION DRAWINGS

DATE 5-29-84

* (14) (C) (P) (C) (E)

Drivall must extend one side of this wall to underside of roof sheathing.

Mechanical Contractor to provide for combustion air for heater portion of utility rooms. All fans to exhaust directly to outside with solid connection, with raincap.



8" CONC. BLOCK (MIN) OR PYRO-BAR TO BOT. ROOF SHEATHING (TYP) 1 HR. RATED

8" CONC. BLOCK (MIN) OR PYRO-BAR TO BOT. ROOF SHEATHING (TYP) 2 HR. RATED

8" CONC. BLOCK (MIN) OR PYRO-BAR TO BOT. ROOF SHEATHING (TYPICAL) 1 HR. RATED

NOTE: CATHEDRAL CEILING IN OMNI RM. & FOYER.

* 2 HR. RATED FIRE WALL

DISPENSING AND PERMIT REQUIRED

SMOKE ALARM ON CEILING

CHIMNEY THRU ROOF RUN BREECHING IN TRUSS SPACE

UNIT "C2" FLOOR PLAN

2056 SQ. FT. / GARAGE 583 SQ. FT.

Note: Gas meter manifolds to be located at ends of west legs of each cluster. Provide gas service in black iron pipe from meter overhead through units in plastic conduit.

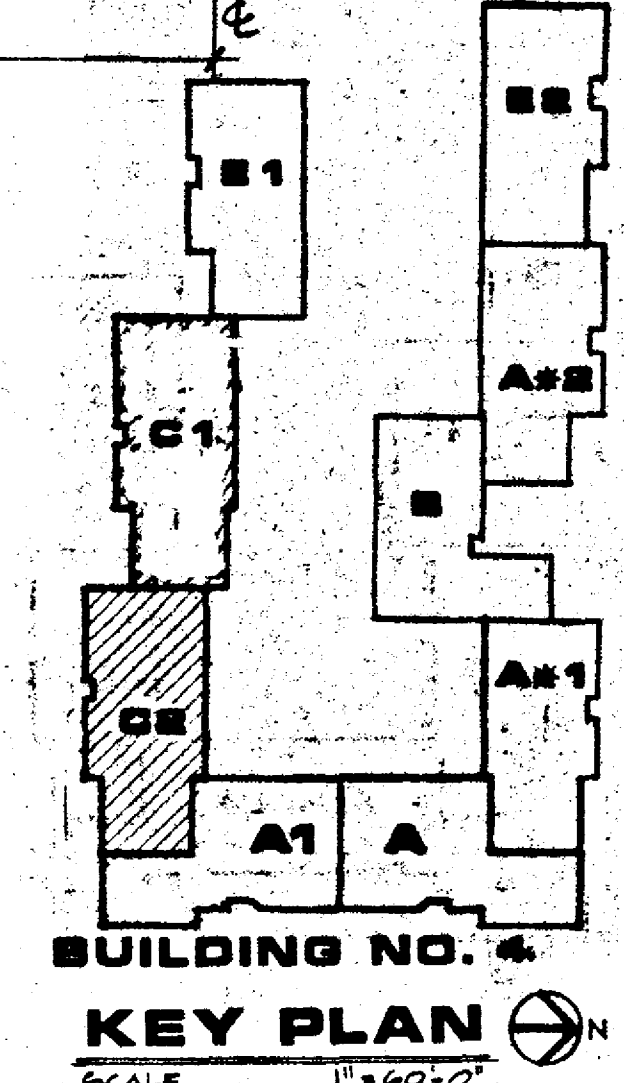
WINDOW SCHEDULE		
UNIT C		
Room		Rough Openings
MBR	1 4-2060 LFFR	8'-5 3/4" x 5'-6-1/2"
BR	1 2-2060 LR	4'-3-1/4" x 5'-6-1/2"
BRFST	1 AB/30-26-30-2048	7'-3-7/8" x 4'-6-1/2"
KITCHN	1 2-1636 LR	3'-7-1/4" x 3'-6-1/2"
UTILITY	1 2-1636 LR	3'-7-1/4" x 3'-6-1/2"

2 LAYERS OF 1/2" FIRE CODE GYP BR. EACH SIDE OF STUDS. EXTEND TO BOT. OF ROOF DECK.

- Note:
- Interior dimensions as shown on plans are correct but not to scale. Do not scale drawings.
 - See Sheet A-1 for door schedule.

COPYRIGHTED MOSKOWITZ & COMPANY DATE 5/29/84

WARNING: Certain concepts embodied in this drawing are covered by U. S. Patent No. 4,345,407 Maurice J. Fishman, Inventor



KEEVA J. KEKST ASSOCIATES ARCHITECTS INC. AIA
 WESTERN RESERVE BUILDING CLEVELAND, OHIO 44113, 216-781-9744
RICHMOND ROAD CONDOMINIUMS
 RICHMOND ROAD BEACHWOOD, OHIO
 CONDOMINIUM CONCEPTS INC. CLEVELAND, OHIO

UNIT "C2"
 BUILDING NO. 4

DWN. BY DATE: 5/29/84
 JOB NO. B1072
A-7