



KEEVA J. KEKST ASSOCIATES ARCHITECTS INC. AIA
 WESTERN RESERVE BUILDING CLEVELAND, OHIO 44113, 216-781-1444
RICHMOND ROAD CONDOMINIUMS
 RICHMOND ROAD BEACHWOOD, OHIO
 CONDOMINIUM CONCEPTS INC. CLEVELAND OHIO

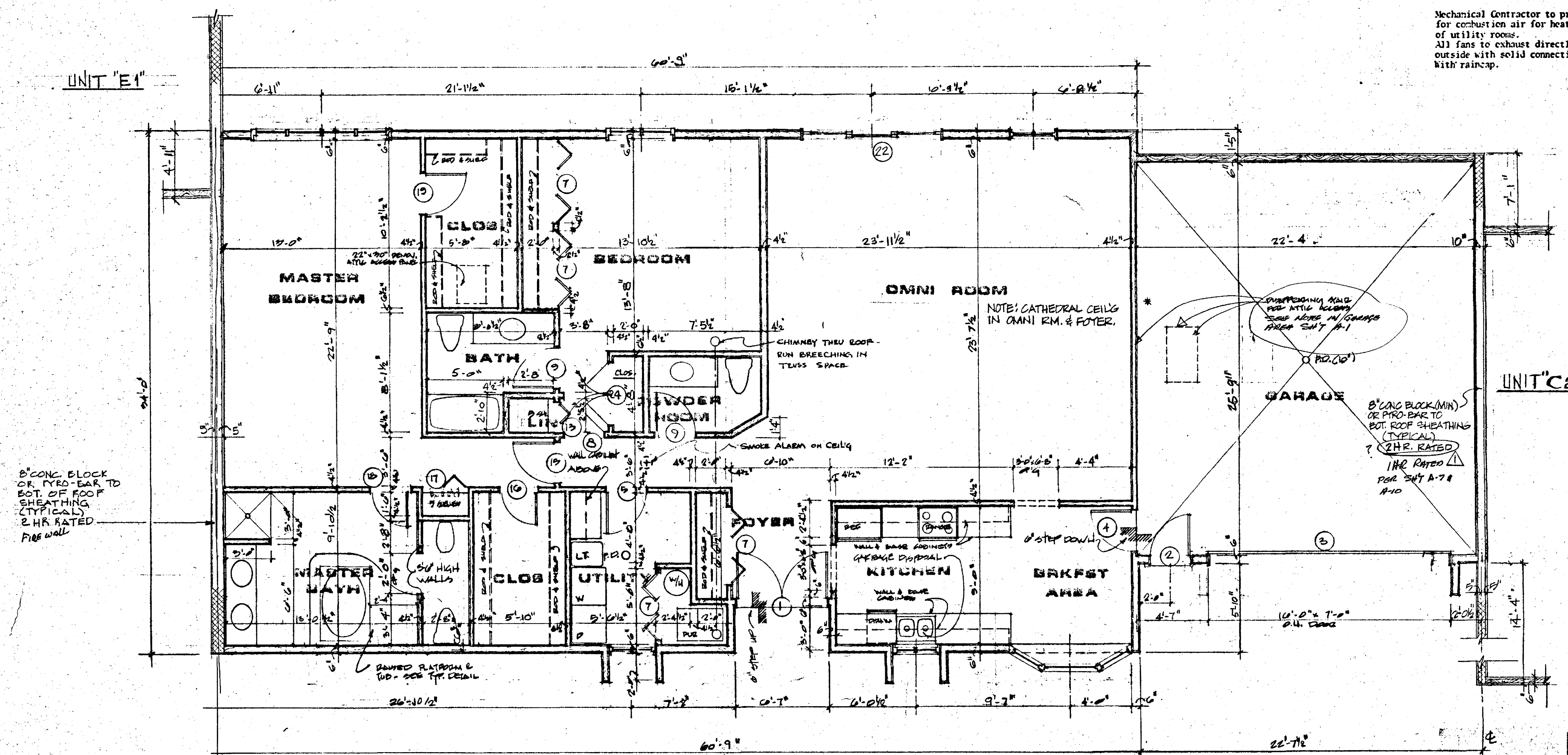
CONSTRUCTION DRAWINGS

DATE: 5-29-84

* (in space)

Drywall must extend one side of this wall to underside of roof sheathing.

Mechanical Contractor to provide for combustion air for heater portion of utility rooms.
 All fans to exhaust directly to outside with solid connection with raincap.



8" CONC. BLOCK OR FRO-BAR TO BOT. OF ROOF SHEATHING (TYPICAL) 2 HR. RATED FIRE WALL

8" CONC. BLOCK (MIN) OR FRO-BAR TO BOT. ROOF SHEATHING (TYPICAL) 2 HR. RATED PER 204 A-7 & 8-10

UNIT "C1" FLOOR PLAN

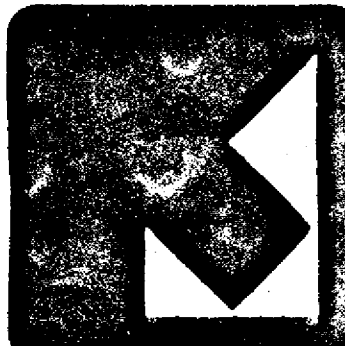
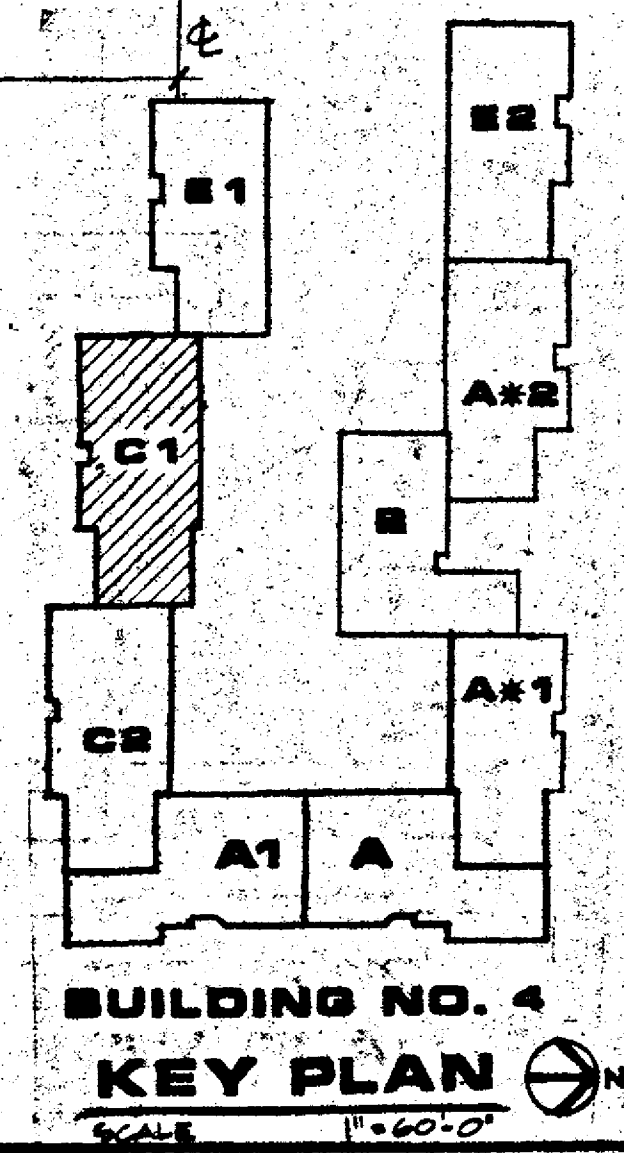
2056 SQ. FT. / GARAGE 585 SQ. FT.

Note:
 Gas meter manifolds to be located at ends of west legs of each cluster. Provide gas service in black iron pipe from meter overhead through units in plastic conduit.

WINDOW SCHEDULE		ROUGH OPENINGS	
Room	Qty	Size	Size
MIR	1	4'-2060 LFPR	8'-5-3/4" x 5'-6-1/2"
BR	1	2-2060 LR	4'-3-1/8" x 5'-6-1/2"
BR/ST	1	AB/30-26-30-2048	7'-3-7/8" x 4'-6-1/2"
KTCIN	1	2-1636 LR	3'-7-1/4" x 3'-6-1/2"
UTILITY	1	2-1636 LR	3'-7-1/4" x 3'-6-1/2"

- Note:
- Interior dimensions as shown on plans are correct but not to scale. Do not scale drawings.
 - See Sheet A-1 for door schedule.

©COPYRIGHTED
 NOSKOWITZ & COMPANY
 DATE 5/29/84
 WARNING:
 Certain concepts embodied in this drawing are covered by U. S. Patent No. 4,345,407
 Maurice J. Fishman, Inventor



UNIT "C1"
 BUILDING NO. 4

OWN. BY
 DATE: 5/29/84
 JOB NO. 81212

A-8