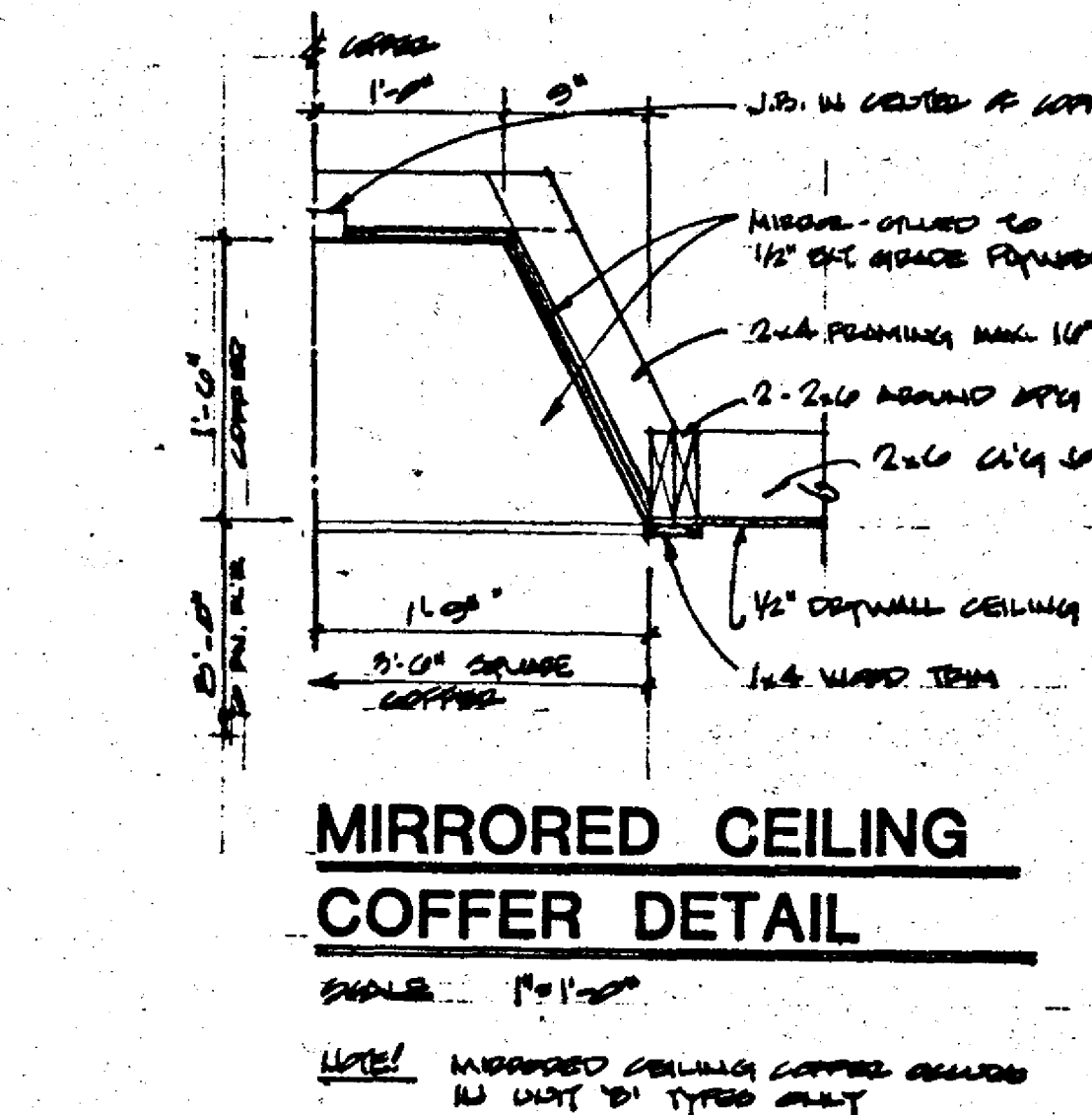
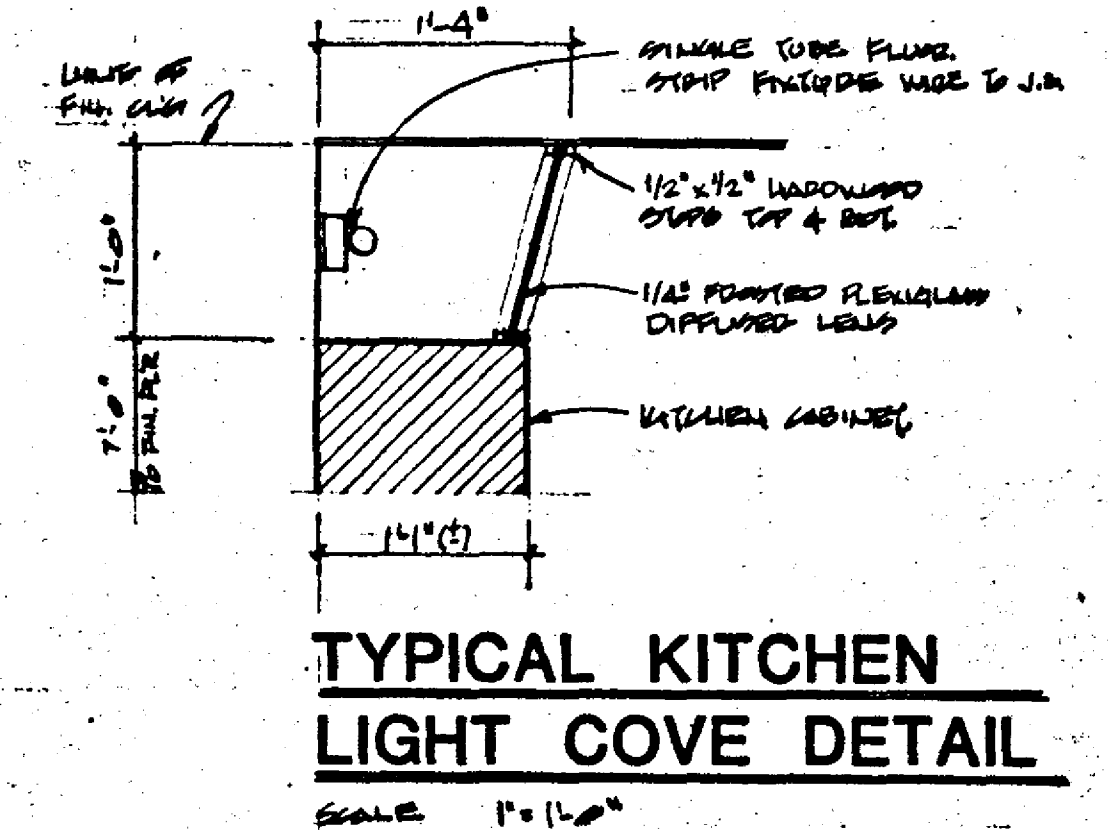


UNIT 'B' ELECTRICAL PLAN
SCALE: 1/4" = 1'-0"

ELECTRICAL LEGEND	
⊕	DUPLEX OUTLET 120V
⊕	DUPLEX OUTLET 120V W/ GROUND FAULT INTERRUPTER
⊕	220V RANGE OUTLET OR DRYER OUTLET
⊕	JUNCTION BOX
⊕	ONE-WAY SWITCH
⊕	2-WAY SWITCH
⊕	PUSH BUTTON
⊕	CEILING MOUNTED FIXTURE (PROVIDE # & ALT.)
⊕	WALL MOUNTED FIXTURE
⊕	EXHAUST FAN
⊕	EXHAUST FAN W/ HEAT LAMP
⊕	EXHAUST FAN W/ LIGHT FIXTURE
⊕	PC - PORCELAIN FULL CHAIN

CONSTRUCTION DRAWINGS
Date: 5-29-84

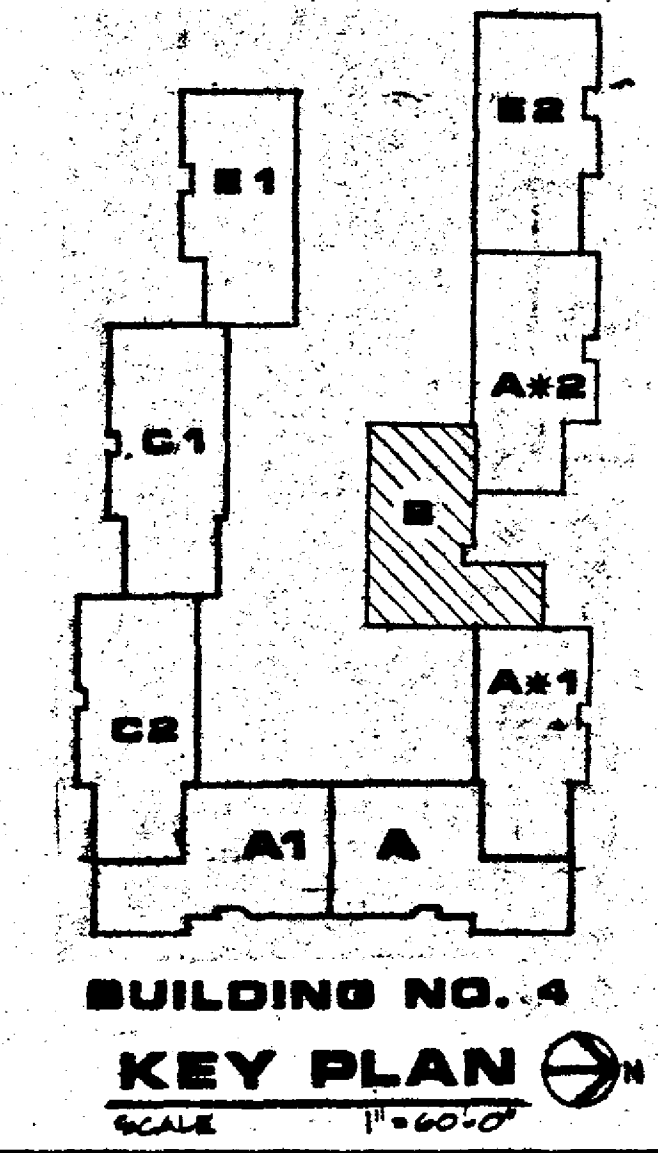
© COPYRIGHTED MOSKOWITZ & COMPANY
DATE: 5/29/84
WARNING: Certain concepts embodied in this drawing are covered by U.S. Patent No. 4,345,487
Maurice J. Fishman, Inventor



NOTE:
Electric meter banks to be located at ends of West legs of each cluster (See Site Utility Plan). Provide fusible service disconnect above meter. Rigid metallic conduit must be provided for penetration of fire wall. Run service cable in floor slab for all units.
All fans to exhaust directly to outside with solid connections.
Alternate:
Provide plastic conduit as required for installation of Cable T.V. and/or Master T.V. Antenna. Verify location and number of outlets.

Note:
Provide for 2 porcelain pull chains in attic space of each unit - verify location.

- Note:**
- Interior dimensions as shown on plans are correct but not to scale. Do not scale drawings.
 - See Sheet A-1 for door schedules.



KEEVA J. KEKST ASSOCIATES ARCHITECTS INC.
WESTERN RESERVE BUILDING CLEVELAND, OHIO 44113, 216.781.9144

RICHMOND ROAD CONDOMINIUMS
RICHMOND ROAD BEACHWOOD, OHIO
CONDOMINIUM CONCEPTS INC. CLEVELAND

ELECTRICAL UNIT "B" BUILDING NO. 4

DWN. BY DATE: 5/29/84
JOB NO. 81072

E:3